

2017 LLWC TRAIL CAMERA DEER SURVEY

Objective: Collect data on buck to doe and doe to fawn ratios

Goals: Consistent sampling throughout LLWC wildlands using managed fields and openings

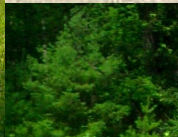
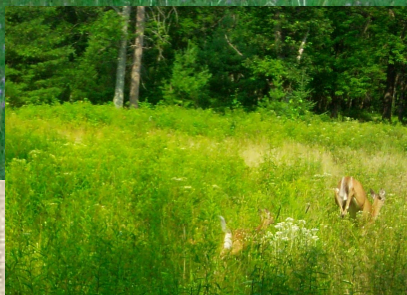
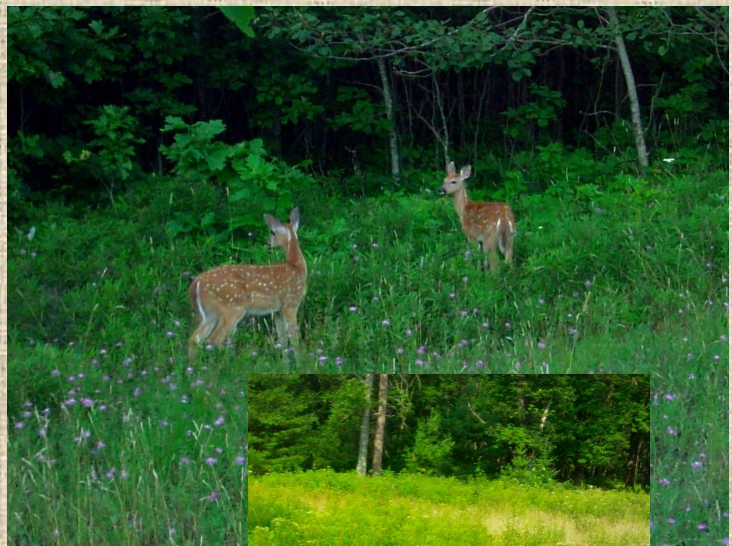
When: Sampling was conducted between August 1 and October 9, 2017

Methods: Fifteen Moultrie field cameras were set out and moved to a different location each day for a minimum of sixteen sample days throughout the contracted time period. Cameras are set to take a picture every 10 seconds when motion is detected.

Survey Results: buck to doe 1:2, fawn to doe 0.75:1

Discussion: 2017 field observations by Down to Earth Environmental, LLC and the volunteer deer survey conducted by the Conservation Committee show that the buck to doe ratio is at or above 1:3. This is the first year that there has been this large a discrepancy between field observations and the camera survey. Many large-bodied does and healthy fawns were observed on the cameras.

OUT WITH MOM



BEHAVIOR

One of the most enjoyable aspects of reviewing trail camera photos is seeing different behaviors displayed. In this series of images, a 1.5 year old button buck acknowledges the dominant buck while both are feeding in a managed field.



JOKES ON US

Every year we get one or two animals that think they are really funny. Even with rapid shutter photo settings on the cameras, sometimes we just get outsmarted. For example, the picture on the left is of a hind leg. That was the only photo snapped for an entire afternoon. The buck pictured on the right either knew what he was doing or was fighting off a ghost. We collected six pictures of him, all looked like this, and no other animal was photographed within two hours of the time these were taken.



DEER HAVE BAD DAYS TOO

Have you ever been walking through the woods, enjoying the scenery, then BAM! you are assaulted by a branch that came out of nowhere? Rest assured that it isn't the woods attacking humans! It is just as likely to happen to creatures who call the woods their home.

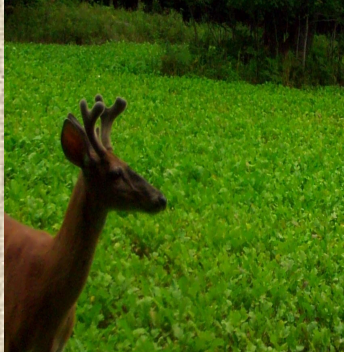
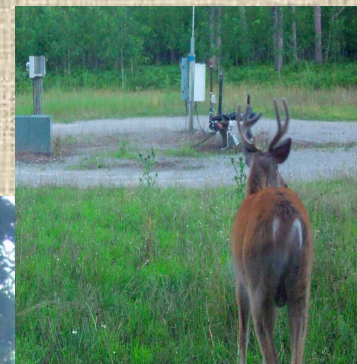
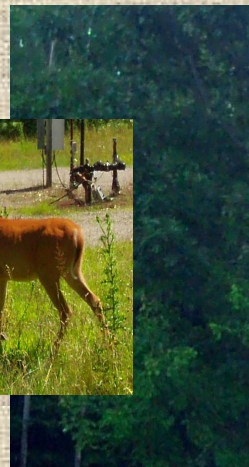


BEST PHOTO OF 2017

Each year there is one photo, or one series, that stands out above the rest. Below is Down to Earth's top pick for 2017. The potential captions are endless.



THE BUCK STOPS HERE



Down to Earth Environmental, LLC wishes an enjoyable and safe season to all LLWC members and their families. Thank you for allowing us to serve your membership.



